

# Iris

collection



Alf presenta

IRIS

---

Alf presents Iris  
Alf presenta Iris  
Alf présente Iris  
Alf präsentiert Iris  
Alf представляет Iris







## IRIS

Con l'innovativo sistema di allunga il tavolo si "trasforma" per accogliere gli ospiti



---

With the innovative extension system the table can be transformed to welcome guests  
Gracias al innovador sistema extensible, la mesa se "transforma" para acoger a los invitados  
Avec l'innovant système d'allonge, la table se « transforme » pour accueillir les hôtes  
Mit dem innovativen Verlängerungssystem „verwandelt“ schafft der Tisch Platz für mehr Gäste.  
С помощью инновационной раздвижной системы стол раскладывается и "трансформируется" для приема гостей



## IRIS

Collezione giorno

---

Day collection  
Colección zona de día  
Collection jour  
Kollektion Wohnen  
Коллекция гостиных





## IRIS

Il design ricercato e la cura nei piccoli particolari parlano di "Made in Italy"



---

The refined design and the care taken over small details show it's "Made in Italy"  
El sofisticado diseño y el cuidado de los pequeños detalles transmiten la filosofía "Made in Italy"  
Le design recherché et le soin des moindres détails parlent de « Made in Italy »  
Das raffinierte Design und die Liebe zum Detail sprechen für „Made in Italy“.  
Изысканный дизайн и внимание к малейшим деталям говорят о "Made in Italy"







## IRIS

Le vetrine sono il complemento ideale alla zona giorno



---

The glass display cabinets are the perfect complement for the living space

Las vitrinas son el complemento ideal para la zona de día

Les bahuts hauts sont le complément idéal pour la zone jour

Die Vitrinen sind die ideale Ergänzung für den Wohnbereich.

Витрины являются идеальным дополнением гостиной



## IRIS

Uno "scrigno" illuminato si apre davanti a noi



---

An illuminated "treasure trove" opens up in front of us  
Un "escaparate" iluminado se abre ante nuestros ojos  
Un « écriin » éclairé s'ouvre devant nous  
Vor uns öffnet sich eine beleuchteter „Schrein“.  
Освещаема "шкатулка" открывается прямо перед нами





## IRIS

IRIS è una collezione giorno modulare

---

IRIS is a modular living room collection

IRIS es una colección modular para la zona de día

IRIS est une collection jour modulaire

IRIS ist eine modulare Kollektion für den Wohnbereich

IRIS - коллекция модульных гостиных





## IRIS

Con l'utilizzo del modulo ad angolo  
si ampliano le possibilità compositive



---

There are so many composition choices thanks to the use of corner units  
Con el uso del módulo de rincón, se amplían las posibilidades compositivas  
Avec l'utilisation du module d'angle les possibilités de composition s'agrandissent  
Mit einem Eckmodul lassen sich unzählige Kompositionen realisieren.  
При использовании углового модуля расширяются композиционные возможности

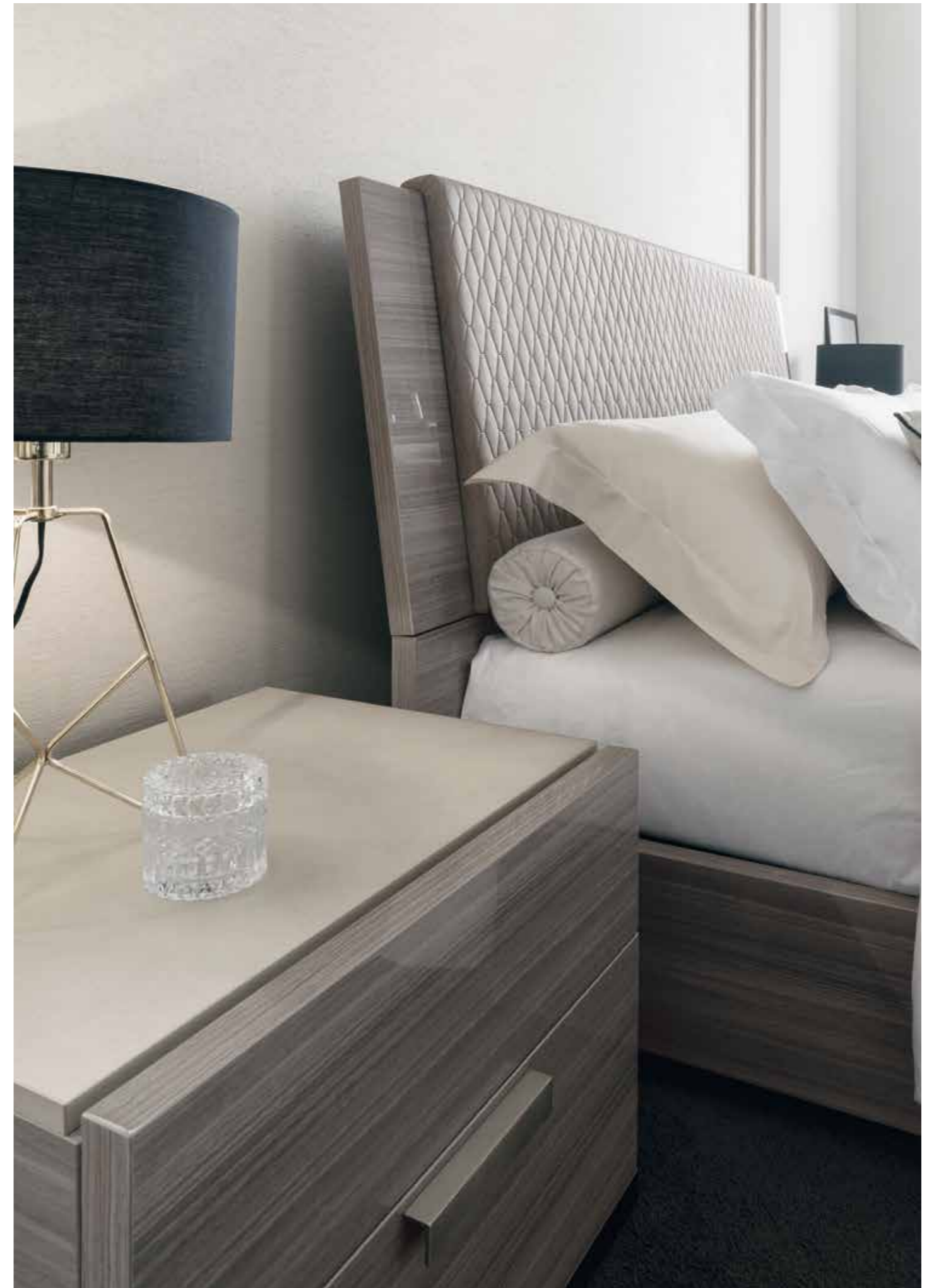
# IRIS

Collezione notte



---

Night collection  
Colección zona de noche  
Collection nuit  
Kollektion Schlafen  
Коллекция спален







## IRIS

IRIS è una collezione notte modulare:  
I vari elementi si combinano in armonia

---

IRIS is a modular bedroom collection in which the elements combine harmoniously together.

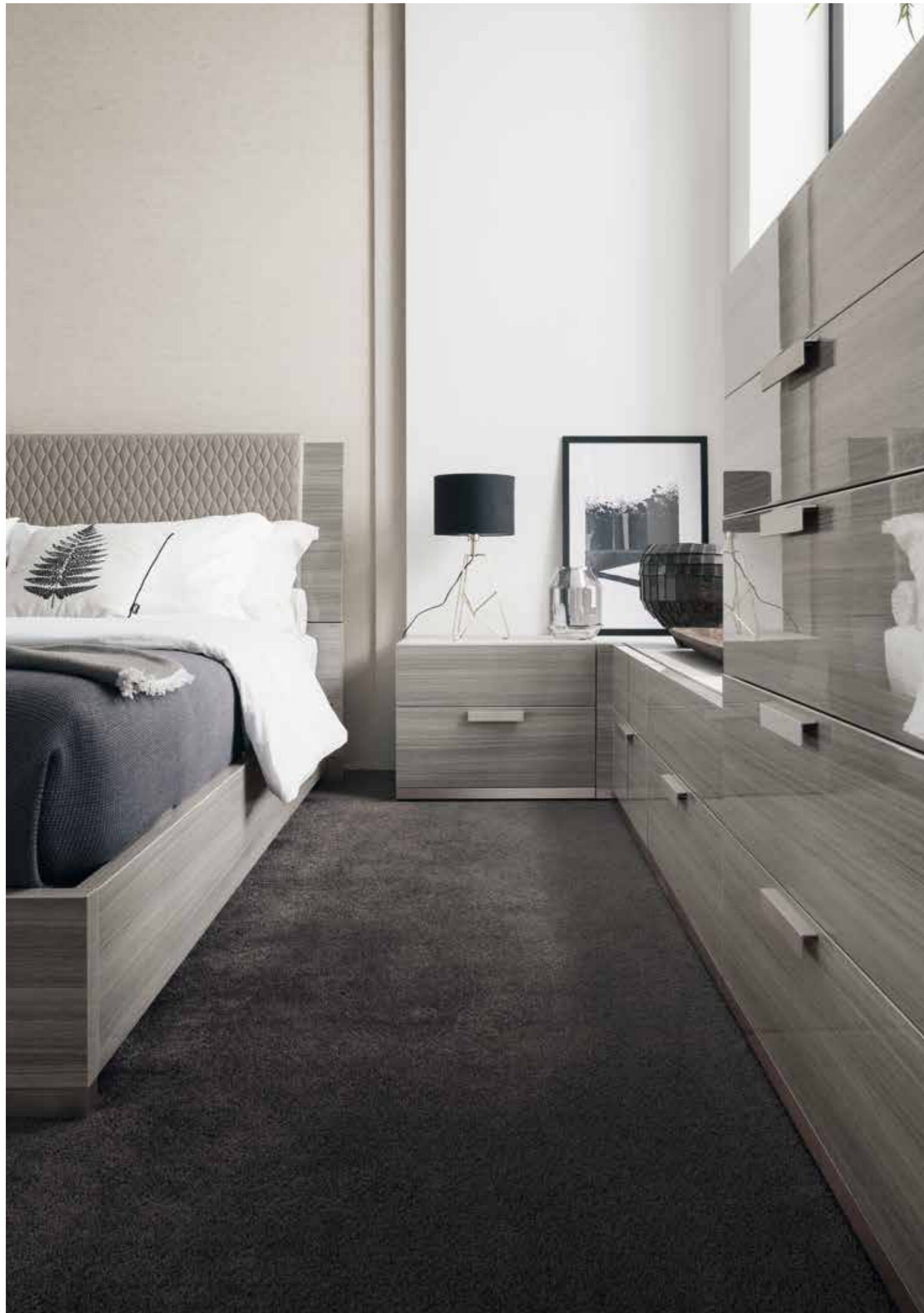
IRIS es una colección modular para la zona de noche, donde los diversos elementos se combinan con armonía

IRIS est une collection nuit modulable : les différents éléments se combinent en harmonie

IRIS ist eine modulare Kollektion für den Schlafbereich, mit Elementen, die sich harmonisch miteinander kombinieren lassen.

IRIS – коллекция модульных спален: различные элементы гармонично сочетаются между собой





## IRIS

Gli spazi sono sfruttati ed ottimizzati al meglio



---

Space is optimised and used to the full  
Los espacios se aprovechan y optimizan al máximo  
Les espaces sont parfaitement exploités et optimisés  
Der Raum wird optimal genutzt  
Пространства использованы и оптимизированы наилучшим образом





## IRIS

I moduli della collezione creano differenti composizioni a seconda delle esigenze

---

The modular units in the collection create different compositions according to need

Los módulos de la colección crean diferentes composiciones según las necesidades

Les modules de la collection créent différentes compositions selon les besoins

Mit den Modulen der Kollektion lassen sich je nach Bedarf verschiedene Kombinationen zusammenstellen

Модули коллекции создают различные композиции в соответствии с требованиями







## IRIS

Le finiture Eucalygray lucida e Concrete opaco  
creano un piacevole ed elegante contrasto

---

The high-gloss Eucalygray and matt Concrete finishes create an attractive, elegant  
contrast

Los acabados Eucalygray brillante y Concrete mate crean un contraste  
agradable y elegante

Les finitions Eucalygray brillante et Concrete mate créent un contraste  
agréable et élégant

Die Ausführungen Eucalygray glänzend und Concrete matt sorgen für einen  
angenehmen und eleganten Kontrast

Варианты отделки Глянцевый Eucalygray и Матовый Concrete создают  
приятный и элегантный контраст





## IRIS

Vanity: un accessorio immancabile in una camera di classe

---

Vanity unit: an indispensable accessory in a high-class bedroom

Vanity: un accesorio imprescindible en todo dormitorio que se precie

Vanity : un accessoire qui ne peut pas manquer dans une chambre de classe

Vanity: ein Accessoir, das in keinem Zimmer mit Klasse fehlen darf

Vanity: непремный элемент изысканной комнаты





## IRIS

Un caldo caminetto trova spazio nel mobile\*

A welcoming fireplace finds its home in the furniture\*

El mueble alberga una cálida estufa térmica\*

Une cheminée chaude trouve sa place dans le meuble\*

Platz für einen wärmenden Kamin\*

Теплый камин с возможностью размещения в тумбе\*

\* ATENZIONE Caminetto non incluso - \* NOTE Fireplace not included -  
\* ATENCIÓN: estufa térmica no incluida - \* ATTENTION Cheminée non comprise -  
\* ACHTUNG Der Kamin wird nicht mitgeliefert - \* ВНИМАНИЕ Камин не включен





## IRIS

Capienti armadi in differenti configurazioni  
completano la collezione

---

Spacious wardrobes in different configurations complete the collection  
La colección se completa con espaciosos armarios en diversas configuraciones  
De grandes armoires dans différentes configurations complètent la collection  
Große Schränke in verschiedenen Konfigurationen vervollständigen die Kollektion  
Вместительные шкафы в различных конфигурациях дополняют коллекцию



IRIS BEDROOM IN EUCALYGREY ECO VENEER HIGH GLOSS / CONCRETE GREY SURFACED



**DRESSER KJIS120**  
With 6 drawers  
inch W 63\* D 20\* H 31\*  
cm L 160,6 P 51 H 78,4  
Crts 1 kg 102 m<sup>3</sup> 0,76



**NIGHT STAND W65 KJIS130**  
With 2 drawers  
inch W 26\* D 20\* H 21\*  
cm L 65,6 P 51 H 52,1  
Crts 1 kg 34 m<sup>3</sup> 0,22



**NIGHT STAND W81 KJIS131**  
With 2 drawers  
inch W 32\* D 20\* H 21\*  
cm L 81,2 P 51 H 52,1  
Crts 1 kg 41 m<sup>3</sup> 0,27



**CORNER MODULE KJIS135**  
inch W 21\* D 21\* H 21\*  
cm L 53,9 P 53,9 H 52,1  
Crts 1 kg 26 m<sup>3</sup> 0,20



**5/DRW. CHEST KJIS115**  
With 5 drawers  
inch W 32\* D 20\* H 49\*  
cm L 81,2 P 51 H 123,3  
Crts 1 kg 82 m<sup>3</sup> 0,62



**MIRROR KJIS140**  
inch W 36\* D 1\* H 43\*  
cm L 92,1 P 2,6 H 109,8  
Crts 1 kg 24 m<sup>3</sup> 0,09



**MIRROR FOR NIGHT STAND KJIS141**  
inch W 26\* D 1\* H 54\*  
cm L 65,5 P 2,6 H 136,1  
Crts 1 kg 22 m<sup>3</sup> 0,08



**VANITY KJIS150**  
With mirror and light  
(to be placed over 2 KJIS130 night stands)  
inch W 51\* D 19\* H 11\*  
cm L 129,8 P 48 H 27,3  
Crts 1 kg 46 m<sup>3</sup> 0,24



**BEDS:**  
**Q.S./UK 5" BED PJIS0150**  
Inner size inch 61" x 80 3/4" - cm 155 x 205  
inch W 65\* D 87\* H 50\*  
cm L 165 P 220 H 126,7  
Crts 2 kg 85 m<sup>3</sup> 0,3



**K.S./UK 6.6" BED PJIS0175**  
Inner size inch 76 3/4" x 80 3/4" - cm 195 x 205  
inch W 81\* D 87\* H 50\*  
cm L 205 P 220 H 126,7  
Crts 2 kg 97 m<sup>3</sup> 0,35

**CALIFORNIA BED PJIS0185**  
Inner size inch 73 1/2" x 85 3/4" - cm 187 x 218  
inch W 81\* D 92\* H 50\*  
cm L 205 P 233 H 126,7  
Crts 2 kg 98 m<sup>3</sup> 0,36

**UK 6" BED PJIS0186**  
Inner size inch 73 1/2" x 80 3/4" - cm 187 x 205  
inch W 81\* D 92\* H 50\*  
cm L 205 P 233 H 126,7  
Crts 2 kg 98 m<sup>3</sup> 0,36

**180 BED PJIS0202**  
Inner size inch 71" x 80" - cm 180,5 x 200,5  
inch W 68\* D 85\* H 49\*  
cm L 172,5 P 215,5 H 126,7  
Crts 2 kg 92 m<sup>3</sup> 0,33

**BEDS WITH UPHOLSTERED HEADBOARD:**

**Q.S./UK 5" BED PJIS0250 (UK FIRE RETARDANT) PJIS0250I**  
Inner size inch 61" x 80 3/4" - cm 155 x 205  
inch W 65\* D 87\* H 49\*  
cm L 165 P 220 H 124,4  
Crts 2 kg 85 m<sup>3</sup> 0,30

**K.S./UK 6.6" BED PJIS0275 (UK FIRE RETARDANT) PJIS0275I**  
Inner size inch 76 3/4" x 80 3/4" - cm 195 x 205  
inch W 81\* D 87\* H 49\*  
cm L 205 P 220 H 124,4  
Crts 2 kg 97 m<sup>3</sup> 0,35

**CALIFORNIA BED PJIS0285 (UK FIRE RETARDANT) PJIS0285I**  
Inner size inch 73 1/2" x 85 3/4" - cm 187 x 218  
inch W 81\* D 92\* H 49\*  
cm L 205 P 233 H 124,4  
Crts 2 kg 98 m<sup>3</sup> 0,36

**UK 6" BED PJIS0286I (UK FIRE RETARDANT)**  
Inner size inch 73 1/2" x 80 3/4" - cm 187 x 205  
inch W 81\* D 92\* H 49\*  
cm L 205 P 233 H 124,4  
Crts 2 kg 98 m<sup>3</sup> 0,36

**180 BED PJIS0260**  
Inner size inch 71" x 80" - cm 180,5 x 200,5  
inch W 68\* D 85\* H 49\*  
cm L 172,5 P 215,5 H 124,4  
Crts 2 kg 92 m<sup>3</sup> 0,33



**2/D SWINGING WARDROBE (wooden doors) PJIS0010**  
With 2 doors, 1 shelf and 2 hanging rods  
inch W 39\* D 25\* H 90\*  
cm L 99,6 P 63,4 H 227,5  
Crts 5 kg 126 m<sup>3</sup> 0,50



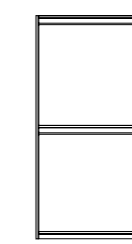
**3/D SWINGING WARDROBE (wooden doors) PJIS0011 (with central mirror) PJIS0012**  
With 3 doors, 2 shelves and 4 hanging rods  
inch W 59\* D 25\* H 90\*  
cm L 148,5 P 63,4 H 227,5  
Crts 8 kg 183/195\* m<sup>3</sup> 0,68/0,71\*



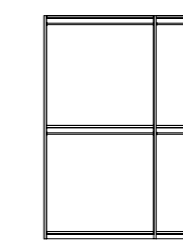
**4/D SWINGING WARDROBE (wooden doors) PJIS0013 (with 2 central mirrors) PJIS0014**  
With 4 doors, 2 shelves and 4 hanging rods  
inch W 78\* D 25\* H 90\*  
cm L 197,3 P 63,4 H 227,5  
Crts 8 kg 221/243\* m<sup>3</sup> 0,76/0,76\*



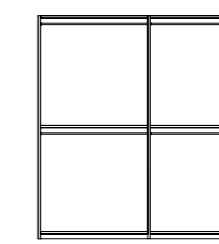
**6/D SWINGING WARDROBE (wooden doors) PJIS0017 (with 2 mirrors) PJIS0018**  
With 6 doors, 3 shelves and 6 hanging rods  
inch W 116\* D 25\* H 90\*  
cm L 295 P 63,4 H 227,5  
Crts 10 kg 319/341\* m<sup>3</sup> 0,98/0,98\*



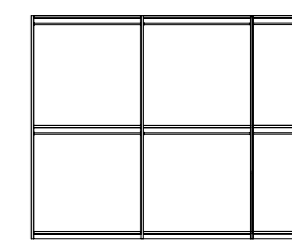
**3/D WOOD DRAWER UNIT KJMM025**  
With 3 drawers  
inch W 37\* D 19\* H 25\*  
cm L 95,1 P 49,2 H 62,7  
Crts 1 kg 34 m<sup>3</sup> 0,40



**3/D SWINGING WARDROBE (wooden doors) PJIS0011 (with central mirror) PJIS0012**  
With 3 doors, 2 shelves and 4 hanging rods  
inch W 59\* D 25\* H 90\*  
cm L 148,5 P 63,4 H 227,5  
Crts 8 kg 183/195\* m<sup>3</sup> 0,68/0,71\*



**4/D SWINGING WARDROBE (wooden doors) PJIS0013 (with 2 central mirrors) PJIS0014**  
With 4 doors, 2 shelves and 4 hanging rods  
inch W 78\* D 25\* H 90\*  
cm L 197,3 P 63,4 H 227,5  
Crts 8 kg 221/243\* m<sup>3</sup> 0,76/0,76\*



**6/D SWINGING WARDROBE (wooden doors) PJIS0017 (with 2 mirrors) PJIS0018**  
With 6 doors, 3 shelves and 6 hanging rods  
inch W 116\* D 25\* H 90\*  
cm L 295 P 63,4 H 227,5  
Crts 10 kg 319/341\* m<sup>3</sup> 0,98/0,98\*

\* indicate weight and volume of wardrobe with mirrors.

# IRIS DINING ROOM IN EUCALYGREY ECO VENEER HIGH GLOSS / CONCRETE GREY SURFACED



**3/D BUFFET W209 KJIS611**  
With 3 doors and 1 internal drawer

inch W 69" D 20" H 31"  
cm L 173,9 P 51 H 78,4  
Crts 1 kg 107 m<sup>3</sup> 0,82



**2/D BUFFET W177 KJIS610**  
With 2 doors and 1 internal drawer

inch W 46" D 20" H 31"  
cm L 116,7 P 51 H 78,4  
Crts 1 kg 74 m<sup>3</sup> 0,56



**EXTEN. TABLE W250 PJIS0616**  
With 1 leaf w 21 1/4" cm 54

inch W 77"/98" D 39" H 30"  
cm L 196/250 P 100 H 76,4  
Crts 2 kg 118 m<sup>3</sup> 0,70



**2/D CURIO CABINET PJIS0600**  
With doors

inch W 39" D 20" H 74"  
cm L 97,9 P 51 H 188,2  
Crts 2 kg 123 m<sup>3</sup> 1,27

**EXTEN. TABLE W210 PJIS0615**  
With 1 leaf w 19 3/4" cm 50

inch W 63"/83" D 37" H 30"  
cm L 160/210 P 95 H 76,4  
Crts 2 kg 103 m<sup>3</sup> 0,56



**1/D CURIO RIGHT KJIS605**  
**LEFT KJIS606**

With 1 door

inch W 19" D 20" H 74"  
cm L 49 P 51 H 188,2  
Crts 1 kg 70 m<sup>3</sup> 0,58



**BOOKCASE RIGHT KJIS635**  
**LEFT KJIS636**

With 1 door

inch W 19" D 20" H 74"  
cm L 49 P 51 H 188,2  
Crts 1 kg 59 m<sup>3</sup> 0,58



**CORNER UNIT RIGHT KJIS637**  
**LEFT KJIS638**

With 1 drawer and 1 shelf

inch W 44" D 21" H 31"  
cm L 112,3 P 54 H 78,4  
Crts 1 kg 67 m<sup>3</sup> 0,59



**2 CHAIRS KJIS620**  
**2 CHAIRS (UK FIRE RETARDANT) KJIS6201**

With eucalygrey eco veneer high gloss structure, seat and back in fabric

inch W 20" D 24" H 42"  
cm L 51 P 60 H 105,5  
Crts 1 kg 22 m<sup>3</sup> 0,43

**1 CHAIR KJIS621**  
**1 CHAIR (UK FIRE RETARDANT) KJIS6211**

With eucalygrey eco veneer high gloss structure, seat and back in fabric

inch W 20" D 24" H 42"  
cm L 51 P 60 H 105,5  
Crts 1 kg 13 m<sup>3</sup> 0,43



**TV BASE FOR FIREPLACE\* KJIS630**

With 2 doors and 1 drawer

inch W 75" D 20" H 31"  
cm L 191 P 51 H 78,4  
Crts 1 kg 109 m<sup>3</sup> 0,9



**MIRROR KJIS140**

inch W 36" D 1" H 43"  
cm L 92,1 P 2,6 H 109,8  
Crts 1 kg 24 m<sup>3</sup> 0,09

\*NOTE: A RECESSED DECORATIVE ELECTRIC FIREPLACE MEASURING 26" CAN BE INSERTED IN THE FIREPLACE BASE UNIT

IRIS  
COLLECTION

design  
c.r.s. Alf

photo  
STEP

selection  
LUCE

print  
SINCROMIA



A.L.F. UNO S.P.A. is certified by the **ISO 9001:2008**.

Our furniture finishes are mainly UV-based. All our furniture board is within the E1 norm for formaldehyde emission. By using UV-based finish the formaldehyde is sealed within the furniture board keeping emissions to an absolute minimum.

ATTENTION: PRODUCT APPEARANCE, SIZE, AND/OR MATERIALS MAY BE SUBJECT TO CHANGE WITHOUT NOTICE